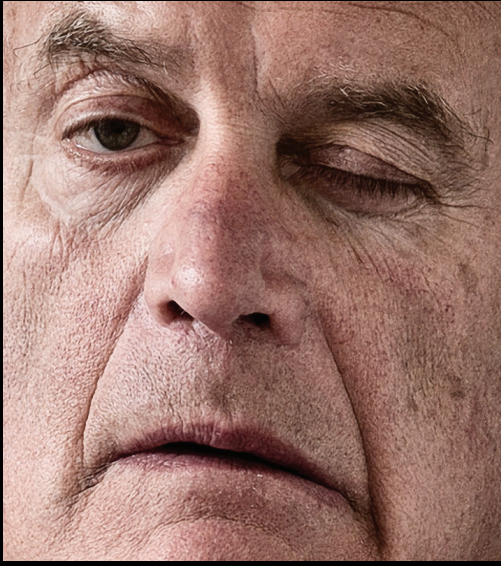


WHEN STROKE STRIKES, ACT **F.A.S.T.**



FACE

Has the person's face fallen on one side? Can they smile?



A RMS

Can the person raise both their arms and keep them there?



SPEECH

Is the person's speech slurred?



TIME

To call **112** or **999** if you see any single one of these signs.

FOR MORE INFORMATION, VISIT **IRISHHEART.IE.**

Supported by

