



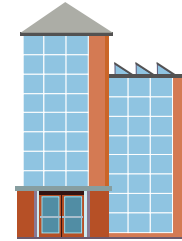
Word Cards (1)

Action for Life

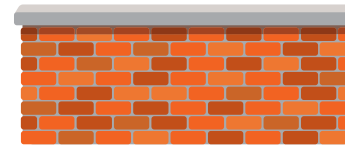
LESSON
3



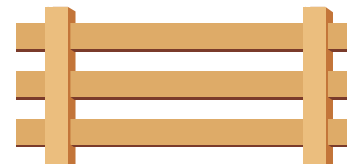
Building



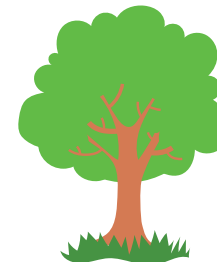
Wall



Fence



Tree



Photocopy, cut
and laminate for
Lesson 3



One set = 16 *Symbol Cards* and
16 *Picture Cards*.

Use a full set, or a fraction of a
set for each pair, depending on
time available and appropriate
level of challenge.



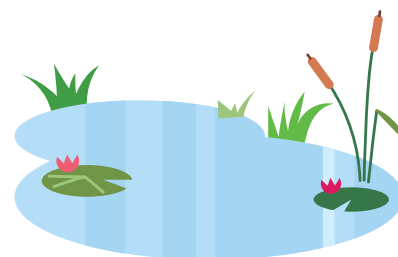
Field



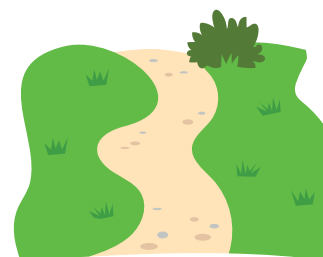
Bushes



Pond



Footpath



Photocopy, cut
and laminate for
Lesson 3



One set = 16 *Symbol Cards* and
16 *Picture Cards*.

Use a full set, or a fraction of a
set for each pair, depending on
time available and appropriate
level of challenge.



Word Cards (3)



Stream



Tree Swing



Seat



Wild Animals



Photocopy, cut
and laminate for
Lesson 3



One set = 16 *Symbol Cards* and
16 *Picture Cards*.

Use a full set, or a fraction of a
set for each pair, depending on
time available and appropriate
level of challenge.



Playground



Tree stump



Forest



Steep slope



Photocopy, cut
and laminate for
Lesson 3



One set = 16 *Symbol Cards* and
16 *Picture Cards*.

Use a full set, or a fraction of a
set for each pair, depending on
time available and appropriate
level of challenge.